



Bezpečnost která funguje aneb proč NGFW již nestačí.

## How a breach impacts your business

**97% of all organizations have been breached.**



**\$3.86M**

Average cost of a data breach



**6.4%**

Average one-year cost increase



**5%**

Average stock price drop



**65%**

Of customers lost trust in the brand

## Organizations lack cyber security skills



**75%**

Of companies  
lack security  
expertise



Less than

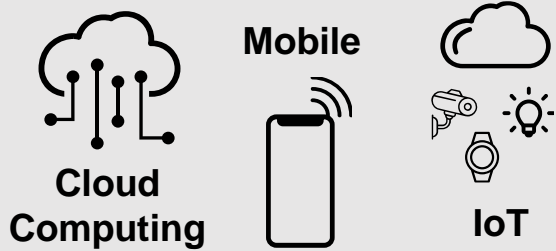
**7%**

of full-time IT  
staff dedicated  
to security

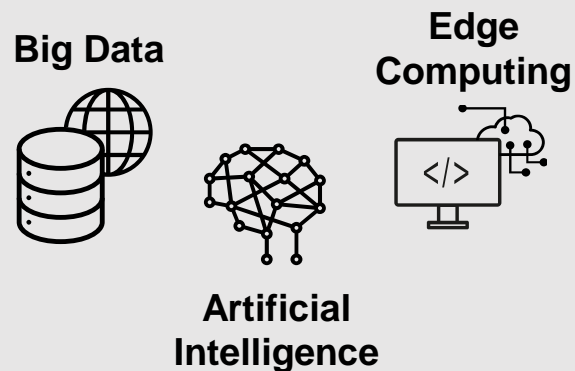
Today, the CISO's job is to manage security risk across the enterprise.

Enterprise security strategy needs to shift from pre-breach prevention to **fast post-breach detection and mitigation.**

– Timothy Liu, Co-Founder and CTO, Hillstone Networks



# Enterprise IT Infrastructure Has Shifted Dramatically



The enterprise perimeter no longer exists



**96%**  
Of enterprises  
use cloud



**56%**  
Cloud over total IT  
spending



**13 Billion**  
Mobile devices  
in use



**26 Billion**  
IoT devices  
in use

The attack surface has no boundary


The Threat Landscape Has Also Shifted Dramatically

 92% New Variants  
670M New Malware Variants

20%  SSL/TLS Traffic Hiding Malware

 27% YoY

92% Stolen Cloud Credentials 

 5.4B WannaCry Blocked

33% Increase in Mobile Ransomware 

1/3 of Attacks Occur in Shadow IT (IoT) 

## Critical security needs

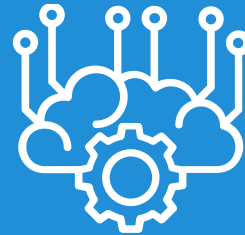
### Better Visibility



Visibility to **See**  
everything everywhere

- User/app/device/network
- From edge to cloud

### Better Intelligence



Intelligence to **Understand**  
what's really going on

- Security Analytics
- Rich Forensics

### Better Protection



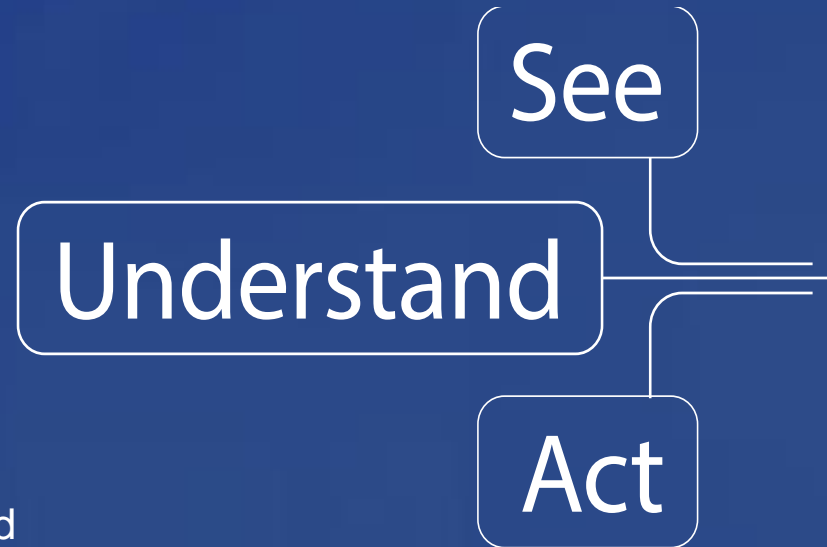
Protection to **Act** across  
Cyber Kill Chain

- Real-time threat mitigation
- Timely incident response

- See across edge to the cloud
- See into VMs and traffic
- See all users, devices, applications and networks

- Comprehensive Security Analytics
- High-speed Network Traffic Analysis
- Intelligently understand cyber kill chain

- Centralized management and distributed enforcement
- Real-time and effective enforcement
- High-speed and large capacity systems



Security  
that  
Works!



# How it works?

See

Understand

Act

## Threat Correlation Analytics

### Indicators of Compromises (IOCs)

IOCs

IOCs

IOCs

IOCs

IOCs

IOCs

IOCs

IOCs

...

### Threat Detection Engines

StoneShield

Sandbox

Intrusion  
Prevention

Anti-Virus

URL  
Filtering

Anti-Spam

IP  
Reputation

Botnet C&C  
Detection

...

Public Cloud

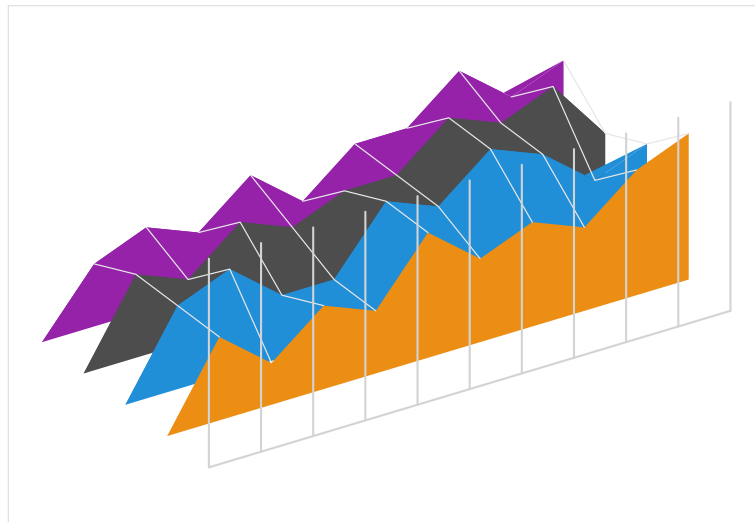
Private Cloud

Enterprise Networks

Remote Locations

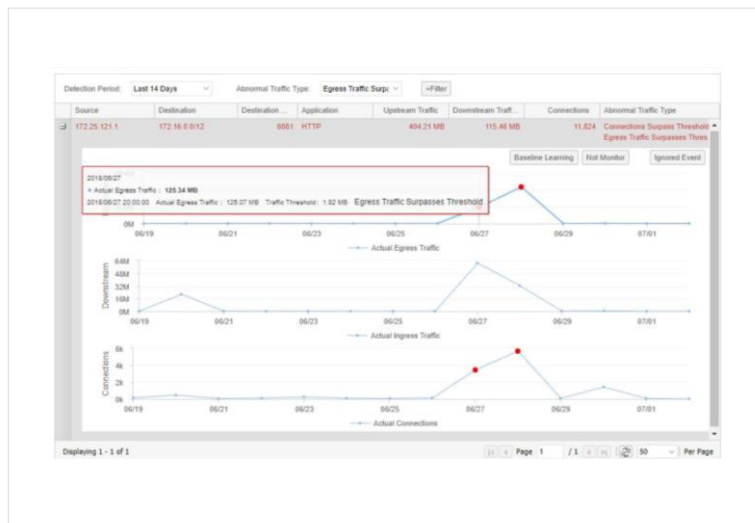
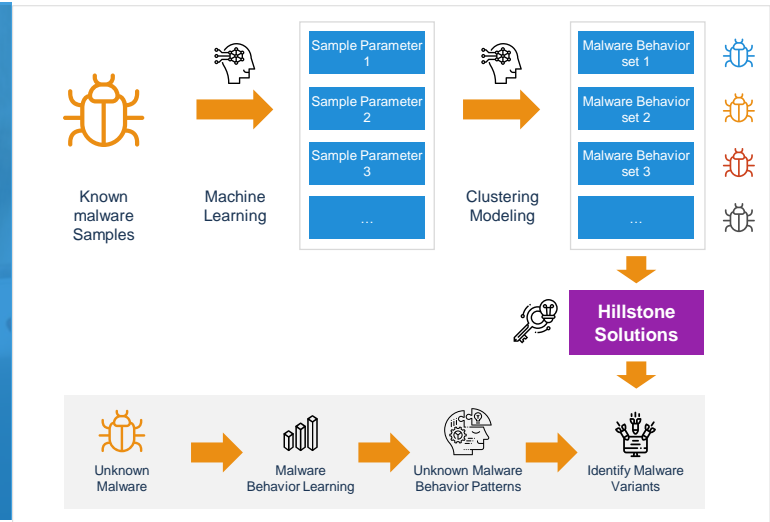
...

# Security Analytics – Detect the Known and Unknown



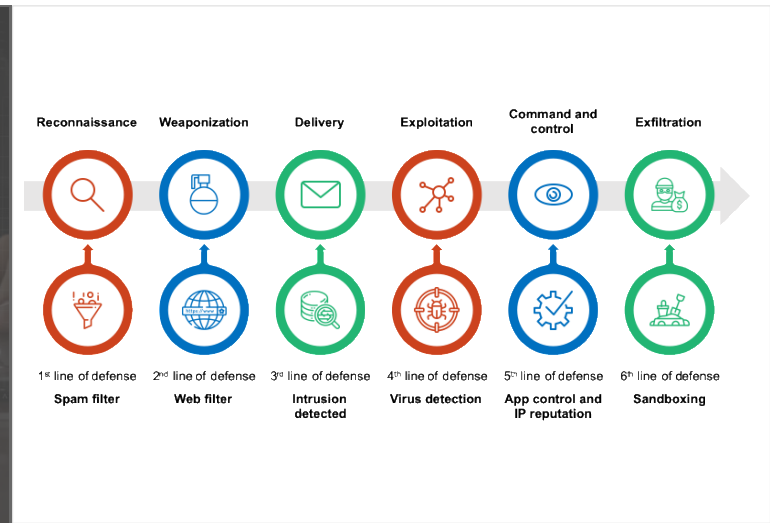
## Abnormal Behavior Detection

## Unknown Malware Detection

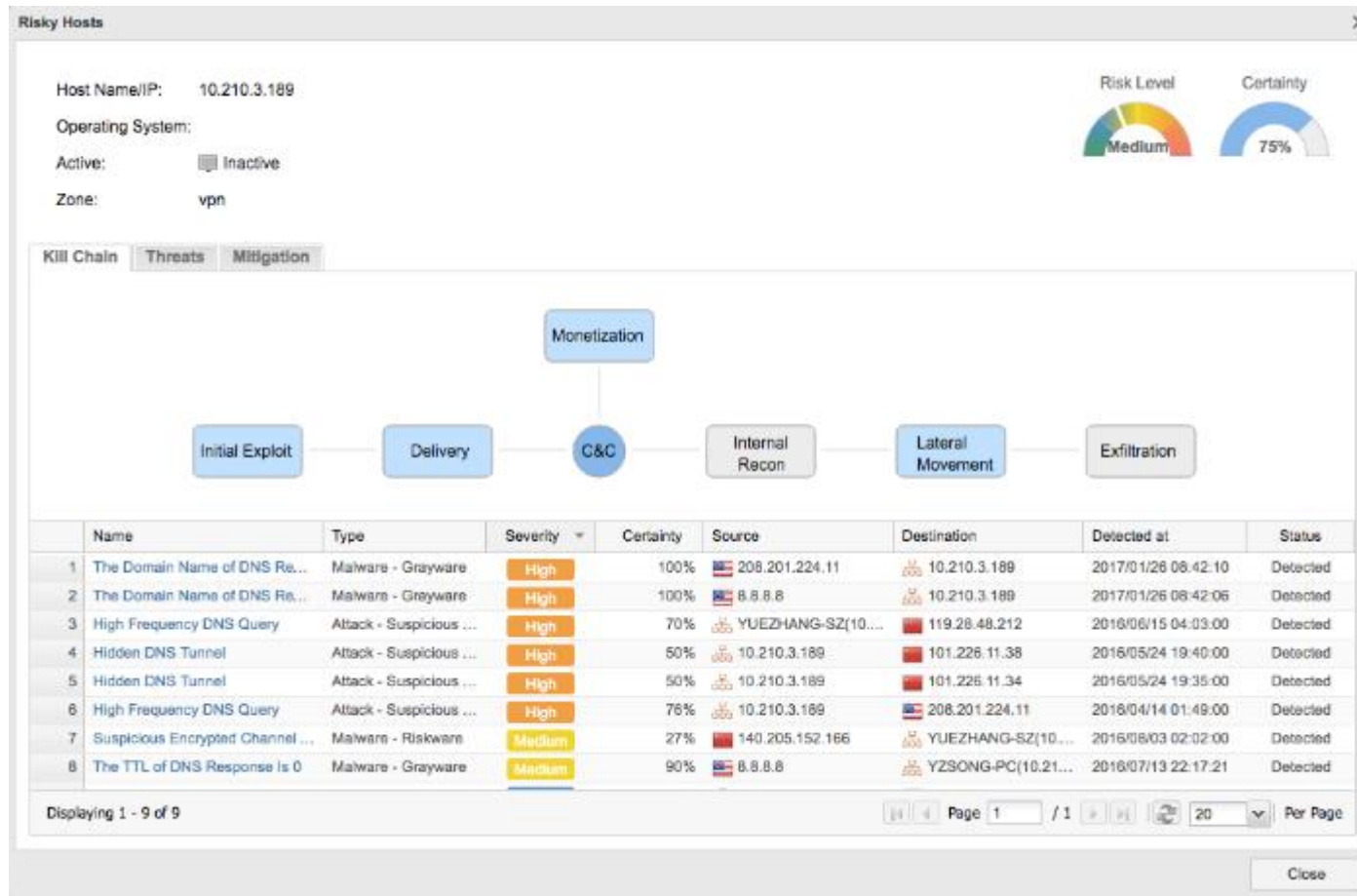


## Network Traffic Analytics

## Threat Correlation and Kill Chain

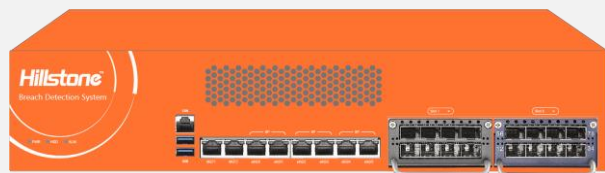


# Highlight: Complete Kill Chain Mapping



- *Map threat events into each of 7 cyber kill chain stages*
- *Show threat name, type, source/target IP, severity, certainty etc.*
- *Trace the threat over time through its full lifecycle*

# Hillstone sBDS - Server Breach Detection System

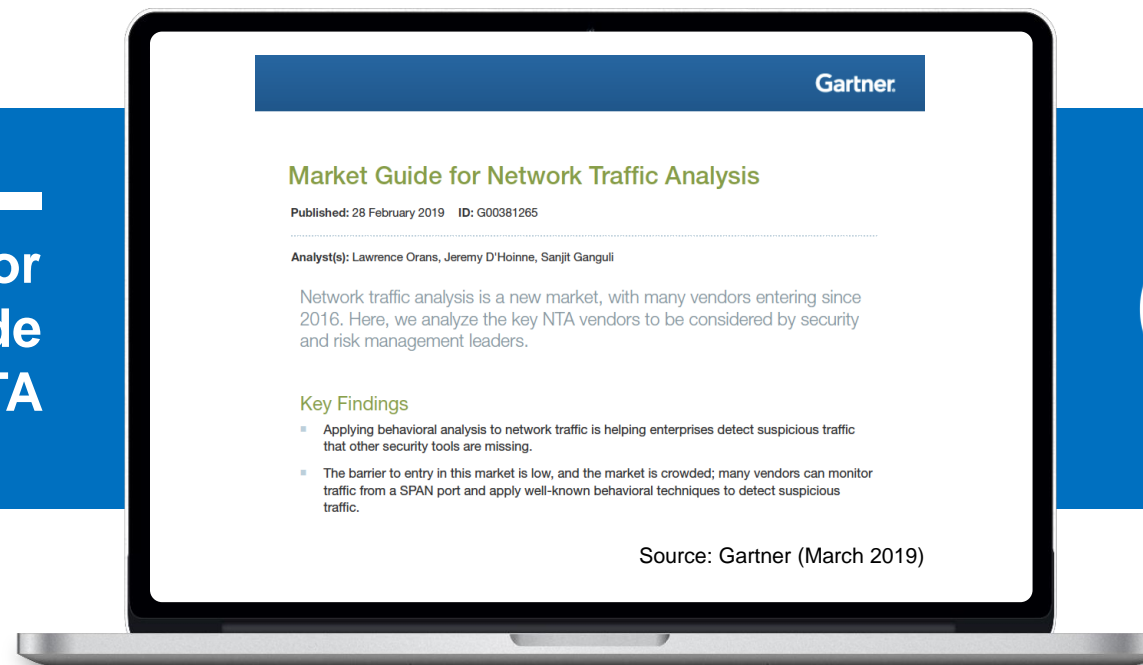


—

Detects Advanced Threats targeting Critical Servers and Hosts  
Built upon Data Analytics and Machine Learning

—

Representative Vendor  
in Gartner Market Guide  
for NTA



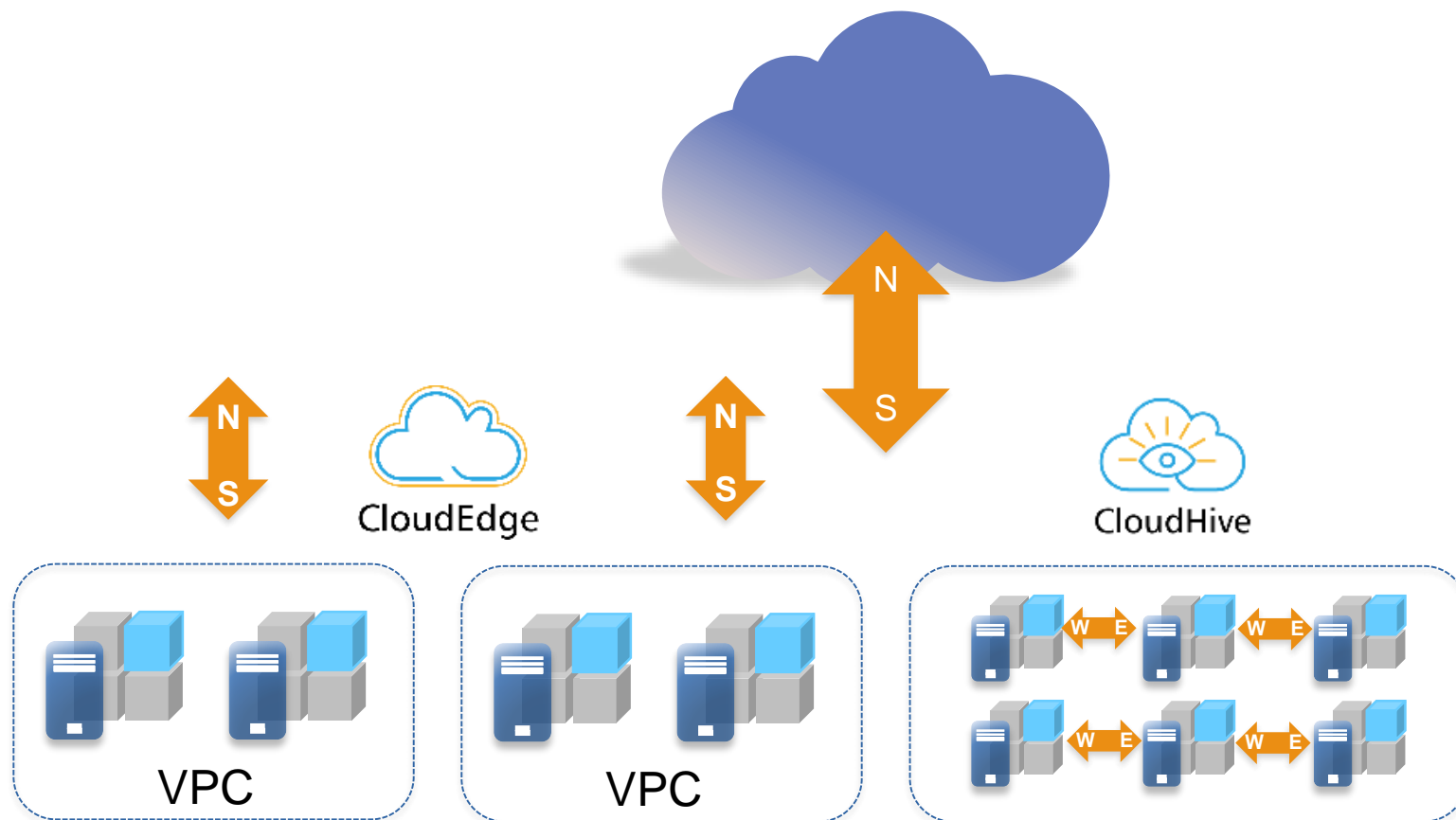
**Gartner**®

# Introducing Hillstone NIPS Solution

- Unparalleled threat protection without performance compromise
- Granular reporting with user targeted viewpoints
- Ease of deployment and centralized management
- High Availability without network Interruption



# Complete Protection for the Cloud



CloudEdge

Protect Each VPC

Integrate with NFV

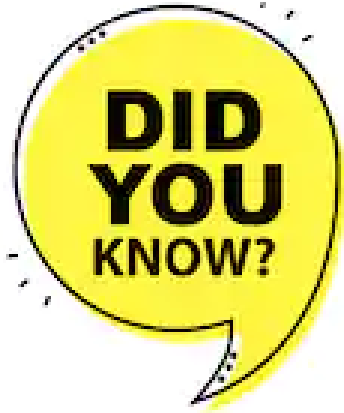
**Public Cloud** **Private Cloud**

CloudHive

Protect VMs with Micro-segmentation

**Private Cloud**

The graphic features a blue background with a faint image of a person's hands holding a tablet. It includes icons for CloudEdge (a cloud with a checkmark) and CloudHive (a cloud with an eye). The text is arranged in a structured layout, with 'Public Cloud' and 'Private Cloud' in large, bold white letters. The overall theme is cloud security and protection.



## Security Challenges in Cloud

How many HW servers do you have?

How many VMs do you have?

How many networks do you have?

How much traffic on each VM?

Is there any traffic between VMs?

What kind of applications on each VM?

Which VM was compromised?

Which VM is being attacked?





# Data Center Scale



## High Performance

- 1Tbps



## High Reliability

- Carrier grade reliability at 99.999%
- twin-mode HA
- Fully redundant HW architecture



## Powerful Features

- Comprehensive security features for L2~L7 protection



## High Scalability

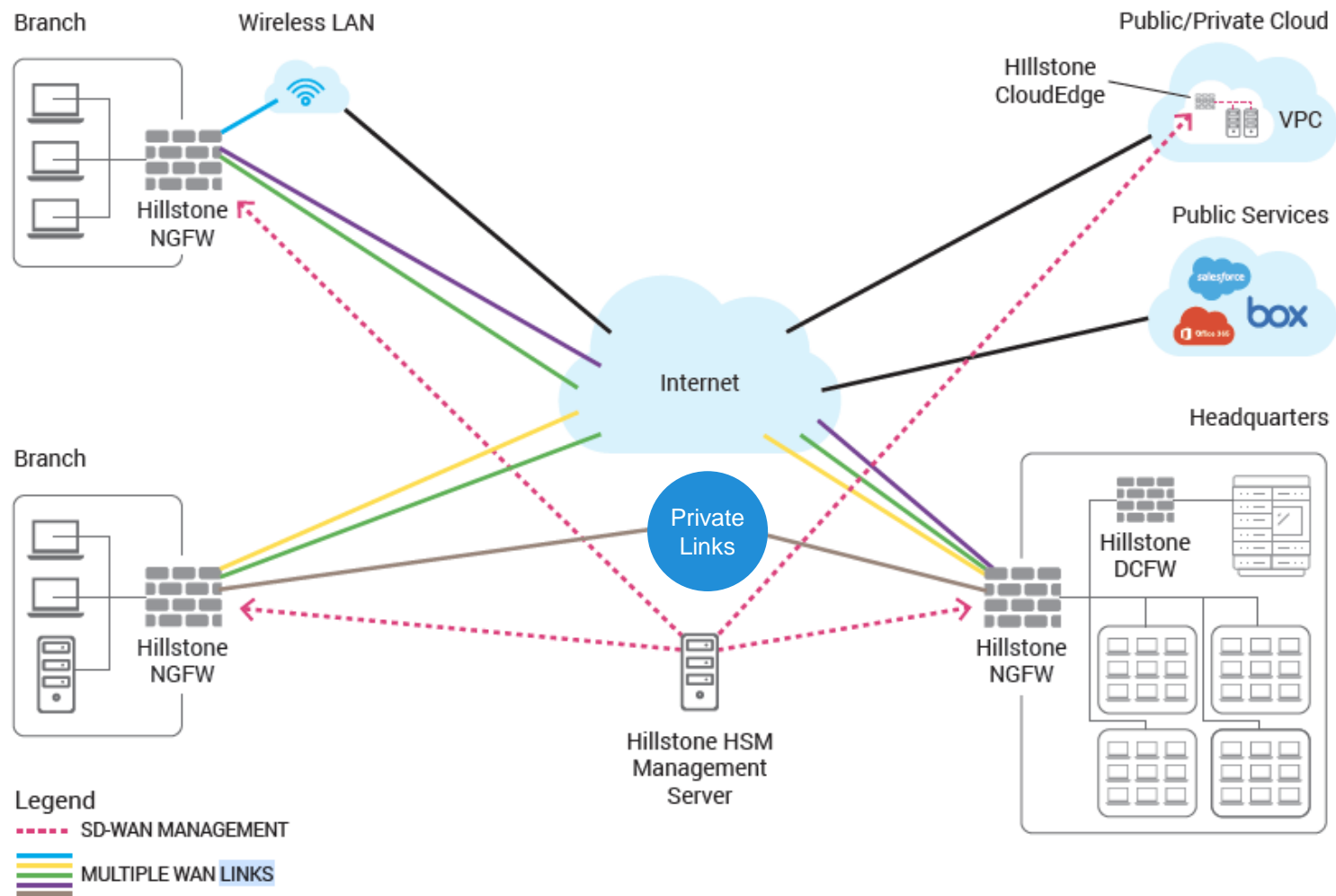
- Fully distributed architecture
- Future expansion up to 7Tbps



# SD-WAN

- Intelligent Multilink Management and Optimization

- Centralized Management with Zero-Touch Provisioning at the Edge



- Seamless and Comprehensive Encryption

- Award-Winning Enterprise-Grade Security Foundation

# Hillstone key initiatives and technologies

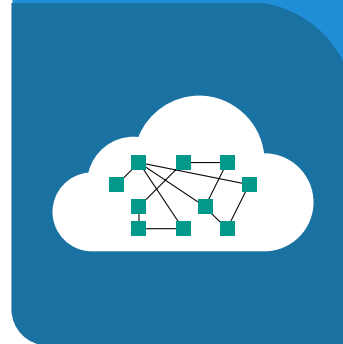
## Security Analytics

- Network Traffic Analytics
- Abnormal Behavior Detection
- Unknown Malware Detection
- Threat Correlation and Kill Chain



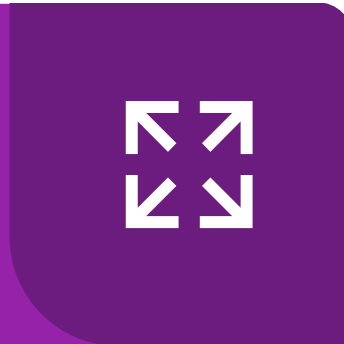
## Cloud Security

- VMware, Openstack, NSX Ready
- AWS, Azure, Alicloud etc.
- East-West Visibility and Protection
- Rest API & Service Orchestration



## Data Center Scale

- Terabit Performance
- Twin-Mode Solution
- Redundancy and Reliability
- Scalability and Performance



## SD-WAN

- Built on Security Foundations
- Centralized Mgmt. w/ Effortless Provision
- Intelligent Multilink Mgmt. & Optimization
- Seamless & Comprehensive Encryption



## Centralized Management



**CloudView**  
Cloud Security Monitoring & Analytics



**HSM/vHSM**  
Hillstone Security Management Platform



**HSA/vHSA**  
Hillstone Security Audit Platform

### PERIMETER PROTECTION

### BREACH PREVENTION

### DATA CENTER PROTECTION

### CLOUD PROTECTION

# The Hillstone Networks Product Portfolio



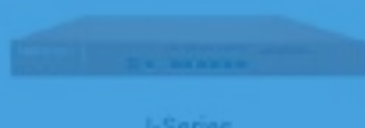
**E-Series**  
Next-Generation Firewall



**T-Series**  
Intelligent Next-Generation Firewall (iNGFW)



**S-Series**  
Network Intrusion Prevention System (NIPS)



**I-Series**  
Server Breach Detection System (sBDS)



**X-Series**  
Data Center Next-Generation Firewall



**CloudEdge**  
Security Solution for Network Function Virtualization (NFV) and Virtual Public Cloud (VPC)



**CloudHive**  
Micro-segmentation for Virtualized Data Centers

## Security Services



StoreShield



Sandbox



Intrusion Prevention



Anti-Virus



URL Filtering



Anti-Spam



IP Reputation



Botnet C&C Prevention

# Centralized Management



**CloudView**  
Cloud Security Monitoring & Analytics



**HSM/vHSM**  
Hillstone Security Management Platform



**HSA/vHSA**  
Hillstone Security Audit Platform

# Core Products

## PERIMETER PROTECTION



**E-Series**  
Next-Generation Firewalls (NGFW)



**S-Series**  
Network Intrusion Prevention System (NIPS)

## BREACH PREVENTION



**T-Series**  
Intelligent Next-Generation Firewalls (iNGFW)



**I-Series**  
Server Breach Detection System (sBDS)

## DATA CENTER PROTECTION



**X-Series**  
Data Center Next-Generation Firewalls

## CLOUD PROTECTION



**CloudEdge**  
Security Solution for Network Function Virtualization (NFV) and Virtual Public Cloud (VPC)



**CloudHive**  
Micro-segmentation for Virtualized Data Centers

# Security Services



StoneShield



Sandbox



Intrusion Prevention



Anti-Virus



URL Filtering



Anti-Spam



IP Reputation



Botnet C&C Prevention

# Hillstone – A Security Technology Innovator



# Expanded security capability with technology partners



## The Benefits

Security  
that  
Works!



Manage  
Security Risks  
across  
Enterprise



Empower with  
Intelligent  
Security  
Analytics



Singapore  
Cyber  
Security  
Act



Achieve  
Security and  
Compliance  
Mandates



Partner with a  
Trusted Security  
Advisor with  
Better TCO

# A global presence across 50+ countries

## Americas

United States  
Mexico  
Brazil  
Ecuador  
Peru  
Colombia  
Argentina  
Costa Rica

## APAC

China  
Singapore  
Indonesia  
Thailand  
Malaysia  
Philippines  
South Korea  
Vietnam

## Europe

Czech Republic  
United Kingdom  
Spain  
Netherlands  
Poland  
Slovenia  
Greece  
Russia

## MEA

UAE  
Pakistan  
Morocco  
South Africa  
Egypt  
Tunisia  
Palestine  
Nigeria

And more...

## Business Snapshot

**17,000+**  
Customers

**50+**  
Countries

**40%+**  
Employees  
in R&D

**Rich**  
Vertical  
Knowledge

## Industry Recognition





# Thank you!

+1 408 508 6750

[inquiry@hillstonenet.com](mailto:inquiry@hillstonenet.com)

5201 Great America Pkwy, #420

Santa Clara, CA 95054

[www.hillstonenet.com](http://www.hillstonenet.com)

The Hillstone Networks logo, featuring the word "Hillstone" in a bold, italicized blue font above the word "NETWORKS" in a smaller, spaced-out blue font. The logo is set against a white rectangular background.

**Hillstone**  
NETWORKS

Hillstone Networks Confidential